

## Booking a place

For more information or to book a place, please telephone or email:

Kate - (0131) 561 6524 or [Kate.Murray@midlothian.gov.uk](mailto:Kate.Murray@midlothian.gov.uk)

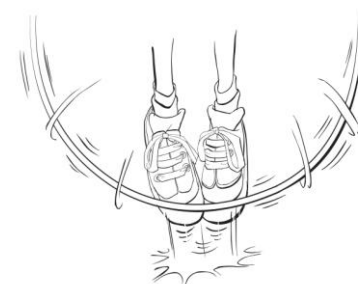
Jenna - (0131) 561 6525 or [Jenna.Mccandlish@midlothian.gov.uk](mailto:Jenna.Mccandlish@midlothian.gov.uk)

Clubs	How to Book/Additional Info
*Midlothian Basketball Club	Contact: <a href="mailto:Midlothianbasketballacademy@gmail.com">Midlothianbasketballacademy@gmail.com</a>
** Run, Jump & Throw (Athletics)	Contact Yvonne Anderson: 0131 561 6518
***Karate	For new members only - booking info below
****Eskvale Hockey	Contact: <a href="mailto:janecarmichael@talktalk.net">janecarmichael@talktalk.net</a>
All other Clubs	Book through Active Schools: <ul style="list-style-type: none"><li>• Phone or Email and leave a message with child's name, school, class &amp; clubs you would like to book.</li><li>• Please give us two contact numbers.</li><li>• You will not receive a reply unless there is a problem with your booking or the club is full.</li><li>• You will receive a confirmation letter prior to the club starting along with a payment envelope and consent form.</li><li>• The payment envelope and consent form must be given to the coach on the first day you attend the club.</li></ul>

**ACTIVITIES WILL NOT RUN:** on Monday 1<sup>st</sup> May or Monday 22<sup>nd</sup> May (May holidays) or Thursday 4<sup>th</sup> May in schools/venues used as a polling station.



## Term 3 2016/2017 Penicuik Area Schools Sports & Physical Activity Programme



**PHONE/EMAIL TO BOOK A PLACE –  
More info on back page**

*Pupils are encouraged to attend after school sports/activity clubs in **ANY** Penicuik school/venue and are not restricted to clubs based only in their own school. Lunchtime clubs are only for pupils based in the school where the sport/activity is taking place.*

[www.activemidlothian.org.uk](http://www.activemidlothian.org.uk)

Follow us on twitter: @active\_mid

### After School Sports/Activity Clubs

After School Activities/Venue	Target Age/Dates	Charge/Block	Day(s)/Time(s)
<b>Table Tennis</b> Sacred Heart PS	<b>P4 – P7</b> 15 <sup>th</sup> May–19 <sup>th</sup> June	<b>£7.50</b> 5 weeks	<b>Monday</b> 3.30 – 4.30pm
<b>Football</b> Mauricewood PS	<b>P1 – P4</b> 8 <sup>th</sup> May – 12 <sup>th</sup> June	<b>£7.50</b> 5 weeks	<b>Monday</b> 3.30 – 4.30pm
<b>American Football</b> Lasswade Centre	<b>P6 &amp; P7</b>	<b>Pay &amp; Play</b>	<b>Monday</b> 4.00 – 5.30pm
<b>KIC Dance</b> Sacred Heart PS	<b>P1 – 4</b> 2 <sup>nd</sup> May – 13 <sup>th</sup> June	<b>£10.50</b> 7 weeks	<b>Tuesday</b> 3.25 – 4.15pm
<b>Table Tennis</b> Mauricewood PS	<b>P4 – P7</b> 16 <sup>th</sup> May–20 <sup>th</sup> June	<b>£9.00</b> 6 weeks	<b>Tuesday</b> 3.30 – 4.30pm
<b>Fancy Footwork Dance</b> Glencorse Centre	<b>P3 – P7</b> 2 <sup>nd</sup> May – 13 <sup>th</sup> June	<b>£10.50</b> 7 Weeks	<b>Tuesday</b> 3.45 – 4.45pm
<b>Football</b> Bilston PS	<b>P1 – P6</b> 2 <sup>nd</sup> May- 13 <sup>th</sup> June	<b>£10.50</b> 7 weeks	<b>Tuesday</b> 3.30pm- 4.30pm
<b>Eskvale Hockey****</b> Dalkeith Campus	<b>P4-S2</b> 18 <sup>th</sup> Apr – 6 <sup>th</sup> June	<b>£3.30</b> Per week	<b>Tuesday</b> 5.00pm – 6.00pm
<b>Table Tennis</b> Roslin PS	<b>P4 – P7</b> 17 <sup>th</sup> May –21 <sup>st</sup> June	<b>£9.00</b> 6 weeks	<b>Wednesday</b> 3.15 – 4.15pm
<b>KIC Dance</b> Mauricewood PS	<b>P1 – P4</b> 3 <sup>rd</sup> May – 14 <sup>th</sup> June	<b>£10.50</b> 7 weeks	<b>Wednesday</b> 3.30 - 4.30pm
<b>Tennis</b> Cuiken PS	<b>P1 – P3</b> 11 <sup>th</sup> May –15 <sup>th</sup> June	<b>£9.00</b> 6 weeks	<b>Thursday</b> 3.30 – 4.30pm
<b>Cricket</b> Sacred Heart PS	<b>P4 – P7</b> 4 <sup>th</sup> May – 25 <sup>th</sup> May	<b>£6.00</b> 4 weeks	<b>Thursday</b> 3.30 – 4.30pm
<b>Karate***</b> Cornbank PS	<b>P1 – P7</b> 11 <sup>th</sup> May– 15 <sup>th</sup> June	<b>£18.00</b> 6 weeks	<b>Thursday</b> 3.30 – 5.00pm
<b>Girls Football</b> Strathesk PS	<b>P1 – P7</b> 4 <sup>th</sup> May – 15 <sup>th</sup> June	<b>£10.50</b> 7 weeks	<b>Thursday</b> 3.45 – 4.45pm
<b>KIC Dance</b> Roslin PS	<b>P1 – P2</b> 4 <sup>th</sup> May – 15 <sup>th</sup> June	<b>£10.50</b> 7 weeks	<b>Thursday</b> 3.00 – 4.00pm

**Help Required** - We require extra volunteers/sports coaches/students to provide additional sports/ PA opportunities for school aged pupils in Penicuik. If you can spare some time, we'd love to hear from you. Contact Kate/Jenna on the contact details on the back of this flyer.

After School Activities/Venue	Target Age/Dates	Charge/Block	Day(s)/Time(s)
<b>Multi Sport</b> Penicuik HS	<b>P6 – S2</b> 4 <sup>th</sup> May-15 <sup>th</sup> June	<b>No cost</b> 7 weeks	<b>Thursday</b> 3.30 – 4.30pm
<b>Eskvale Hockey****</b> The Lasswade Centre	<b>P4 – S2</b> 20 <sup>th</sup> April – 8 <sup>th</sup> June	<b>£3.30</b> Per week	<b>Thursday</b> 5.00pm-6.00pm
<b>KIC Dance</b> Cuiken PS	<b>P3 – P7</b> 5 <sup>th</sup> May – 16 <sup>th</sup> June	<b>£10.50</b> 7 weeks	<b>Friday</b> 12.25– 1.25pm
<b>Upbeat Dance</b> Bilston PS	<b>P1 – P4</b> 5 <sup>th</sup> May – 26 <sup>th</sup> May	<b>£6.00</b> 4 weeks	<b>Friday</b> 12.25– 1.25pm
<b>Midlothian Basketball*</b> Glencorse Centre	<b>P3 – P5</b> Starts 21 <sup>st</sup> April	<b>£4.00</b> Per week	<b>Friday</b> 1.00-1.45pm
<b>Midlothian Basketball*</b> Glencorse Centre	<b>P6 – P7</b> Starts 21 <sup>st</sup> April	<b>£4.00</b> Per week	<b>Friday</b> 2.00 – 2.45pm
<b>Run, Jump &amp; Throw **</b> Beeslack	<b>P1 – P3</b> 12 <sup>th</sup> May – 30 <sup>th</sup> June	<b>£20.00</b> 8 weeks	<b>Friday</b> 2.30 – 3.30pm
<b>Run, Jump &amp; Throw**</b> Beeslack	<b>P4 – P7</b> 12 <sup>th</sup> May – 30 <sup>th</sup> June	<b>£20.00</b> 8 weeks	<b>Friday</b> 3.30 – 4.30pm

### Lunchtime Sports/Activity Clubs

After School Activities/Venue	Target Age/Dates	Charge/Block	Day/Time(s)
<b>Fancy Footwork Dance</b> Strathesk PS	<b>P3 – P5</b> 8 <sup>th</sup> May – 12 <sup>th</sup> June	<b>£5.00</b> 5 weeks	<b>Monday</b> 12.30 - 1.00pm
<b>Basketball</b> Cuiken PS	<b>P4 – P7</b> 8 <sup>th</sup> May – 12 <sup>th</sup> June	<b>£5.00</b> 5 weeks	<b>Monday</b> 12.30 – 1.10pm
<b>Hockey</b> Cornbank PS	<b>P4 – P7</b> 8 <sup>th</sup> May – 12 <sup>th</sup> June	<b>£5.00</b> 5 weeks	<b>Monday</b> 12.30 – 1.00pm
<b>KIC Dance</b> Cuiken PS	<b>P1 – P2</b> 2 <sup>nd</sup> May – 13 <sup>th</sup> June	<b>£7.00</b> 7 weeks	<b>Tuesday</b> 12.30 - 1.10pm
<b>Fancy Footwork Dance</b> Cornbank PS	<b>P1 – P4</b> 11 <sup>th</sup> May – 15 <sup>th</sup> June	<b>£6.00</b> 6 weeks	<b>Thursday</b> 12.30 - 1.10pm
<b>Cricket</b> Cuiken PS	<b>P4 – P7</b> 11 <sup>th</sup> May – 25 <sup>th</sup> May	<b>£3.00</b> 3 weeks	<b>Thursday</b> 12.30 – 1.10pm
<b>Tennis</b> Strathesk PS	<b>P4 – P7</b> 4 <sup>th</sup> May – 15 <sup>th</sup> June	<b>£7.00</b> 7 weeks	<b>Thursday</b> 12.30 – 1.10pm